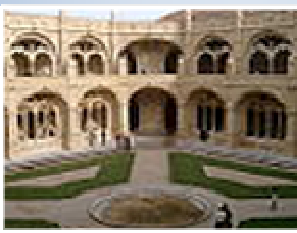


## LISBON

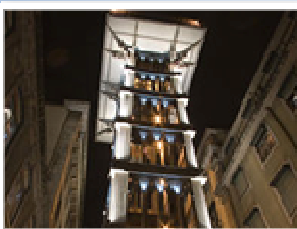
The **capital of Portugal, Lisbon** (Portuguese: **Lisboa**) has experienced a renaissance in recent years, with a contemporary culture that is alive and thriving and making its mark in today's Europe. Perched on the edge of the **Atlantic Ocean**, Lisbon is one of the rare Western European cities that face the ocean and uses water as an element that defines the city. Lisbon enchants travelers with its white bleached limestone buildings, intimate alleyways, and an easy going charm that makes it a popular year round destination.



**Belém Tower** (in Portuguese Torre de Belém) is a fortified tower located in the **Belém district** of Lisbon. The Belém Tower was built in the early sixteenth century in the Portuguese late-Gothic style, the Manueline, to commemorate Vasco da Gama's expedition. This defensive, yet elegant construction has become one of the symbols of the city, a memorial to Portuguese power as it was during the Age of Discovery. In 1983, it was classified, together with the nearby Mosteiro dos Jerónimos as a UNESCO World Heritage Site.



**The Hieronymites Monastery** (Mosteiro dos Jerónimos) is also located in the Belém district. This magnificent monastery can be considered one of the most prominent monuments in **Lisbon** and is certainly one of the most successful achievements of the **Manueline style** (portuguese late-Gothic). In 1983 it was classified by the UNESCO, with nearby Torre de Belém, as a World Heritage Site.



**The Santa Justa Lift** (Portuguese: Elevador de Santa Justa) is a lift in the city of Lisbon at Santa Justa Street. It connects downtown streets with the uphill Carmo Square. The Santa Justa Lift was designed by Raul Mesnier de Ponsard, an engineer born in Oporto to French parents, and apprentice of **Gustave Eiffel**. The iron lift is 45 metres tall and is decorated in neogothic style, with a different pattern on each storey. The top storey is reached by helicoidal staircases and has a terrace that offers views of **Lisbon**

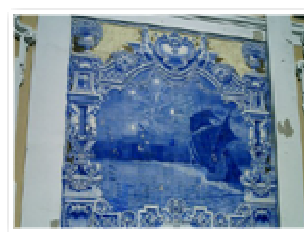
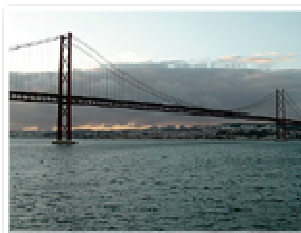
**Castle**, the **Rossio Square** and the **Baixa** neighbourhood. There are two elevator booths. Each booth has a wooden interior and accommodates 24 people. The lift has become a tourist attraction in Lisbon as, among the urban lifts in Lisbon, Santa Justa is the only vertical one.

**The Castle of São Jorge** (Castle of Saint George) occupies a commanding position overlooking the city of Lisbon, and the broad **Tagus River** beyond. The strongly-fortified citadel, which, in its present configuration, dates from medieval times, is located atop the highest hill in the historic center of the city. The castle is one of the main historical and touristic sites of **Lisbon**.

**Santa Maria Maior de Lisboa** or Sé de Lisboa is the cathedral of **Lisbon** and the oldest church in the city. Since the beginning of the construction of the cathedral, in the year 1147, the building has been modified several times and survived many earthquakes. It is nowadays a mix of different architectural styles.

**Parque das Nações**, On Av. Dom Joao II (Metro: Oriente Station. Train: Gare Do Oriente Station.), Built for the 1998 World Expo, the eastern side of town (take the Metro to Oriente) is a change from downtown and has one of the world's largest aquariums, among other sights.

- The oldest district of the city is **Alfama**, close to the Tagus, which has made it relatively unscathed through the various earthquakes.
- The heart of the city is the **Baixa** (Downtown) or city centre; this area of the city is being considered for UNESCO World Heritage Site status. The Baixa is organised in a grid system and a network of squares built after the 1755 Lisbon earthquake, which levelled a great portion of the medieval city.
- **Bairro Alto** (literally upper quarter in Portuguese) is an area of central Lisbon. It functions as a residential, shopping and entertainment district. Today, the Bairro Alto is the heart of Lisbon's youth and of the Portuguese capital's nightlife.



## INFORMATION

### Tourism Office of Lisbon

Turismo de Lisboa  
Visitors & Convention Bureau  
Rua do Arsenal, 15  
1100-038 Lisboa

T: +(351) 210 312 700

F: +(351) 210 312 899