

BANGKOK

The city of **Bangkok** is the capital, largest urban area and primary city of **Thailand**. Known in Thai as Krung Thep Mahanakhon, it was a small trading post at the mouth of the **Chao Phraya River** during the Ayutthaya Kingdom. In the span of over two hundred years, Bangkok has grown to become the political, social and economic center of not only Thailand but for Indochina and South East Asia. Its influence in the arts, politics, fashion, education and entertainment as well as being a business, financial and cultural center of **Asia** has given Bangkok the status of a global city.

The capital is part of the heavily urbanized triangle of central and eastern Thailand which stretches from Nakhon Ratchasima along Bangkok to the industrialized eastern seaboard—it is the most built-up area mainland-South East Asia.

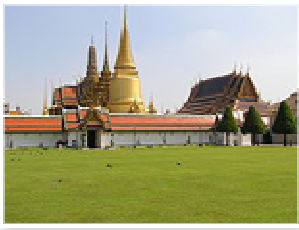


The Grand Palace is a complex of buildings in **Bangkok**. It served as the official residence of the Kings of Thailand from the 18th century onwards. Construction of the Palace began in 1782, during the reign of King Rama I, when he moved the capital across the river from Thonburi to Bangkok. The Palace has been constantly expanded and many additional structures were added over time. The present King of Thailand, King Bhumibol Adulyadej, however, resides at the **Chitralada Palace**.

Wat Pho or **The Temple of the Reclining Buddha**, is a **Buddhist temple** in Phra Nakhon district, Bangkok, Thailand, located in the Rattanakosin district directly adjacent to the Grand Palace. The temple is also known as the birthplace of traditional Thai massage. Prior to the temple's founding, the site was a centre of education for traditional Thai medicine, and statues were created showing yoga positions.

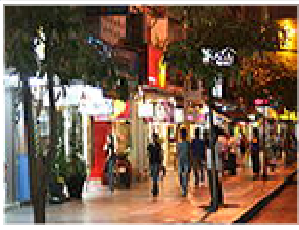


Wat Arun is a Buddhist temple (wat) in the Bangkok Yai district, on the west bank of the **Chao Phraya River**. The outstanding feature of Wat Arun is its central prang (Khmer-style tower). It may be named "Temple of the Dawn" because the first light of morning reflects off the surface of the temple with a pearly iridescence. Steep steps lead to the two terraces. The height is reported by different sources as between 66,80 m and 86 m. The corners are surrounded by 4 smaller satellite prangs. The prangs are decorated by seashells and bits of porcelain which had previously been used as ballast by boats coming to Bangkok from **China**.



statues, and pagodas.

The Wat Phra Kaew (English **Temple of the Emerald Buddha**) is regarded as the most sacred Buddhist temple (wat) in **Thailand**. It is located in the historic center of Bangkok (district Phra Nakhon), within the grounds of the Grand Palace. The construction of the temple started when King Buddha Yodfa Chulaloke (Rama I) moved the capital from Thonburi to Bangkok in 1785. Unlike other temples it does not contain living quarters for monks; rather, it has only the highly decorated holy buildings,



Siam Square is a shopping and entertainment area in the Siam District of **Bangkok**. The area connects to other important shopping centres and links to the other shopping districts by sky bridge, such as Siam Center/Siam Discovery Center, MBK Center, Siam Paragon, Ratchaprasong shopping district and Sukhumvit. Within Siam Square itself, there is a wide range of shops and services, including tutor schools, restaurants, cafe, designer clothing boutiques, record stores, bookshops, Hard Rock Cafe and banks. The customers vary from young-aged school and college students to office workers and foreign tourists. It is sometimes referred to as the "**Shinjuku of Thailand**".

Lumphini Park is a 140-acre (0.57 km²) park in **Bangkok, Thailand**. This park offers rare open space, trees and playgrounds in the Thai capital and contains an artificial lake where visitors can rent a variety of boats. Paths around the park are a popular area for evening joggers and compute to approximately 2.5km in total length. Officially, cycling is only permitted during the day between the times of 10am to 3pm. Smoking is banned throughout the park, as are dogs. Lumpini Park was created in the 1920s by **King Rama VI** on royal property. A statue of the king stands at the southwestern entrance to the park. It was named for Lumbini, the birthplace of the **Buddha** in **Nepal**, and at the time of its creation stood on the outskirts of the city.

INFORMATION

The Office of Tourism Development
Tourism Authority of Thailand
1600 New Phetburi Road
Makkasan, Rajatevee
10310 Bangkok
Téléphone: + (66) 2 250 5500
Fax: + (66) 2 250 5511